

Huebsch is the answer.



Vended  
30 and 45 lb  
Stack Tumble Dryers





## Huebsch is the answer.

Anybody can sell you laundry equipment and discuss the merits of each nut and bolt. However, at Huebsch, our priority is answering your questions about how working with us will make your business easier to run and more profitable.

Customers have selected Huebsch products for their ease of use, supreme durability and because owning a Huebsch product brings a service and support network that's unmatched within the industry. For profitability, reliability and ease of use, Huebsch is the answer.

## Profit Power

### How are Huebsch Stack 30 and Stack 45 models the answers to increasing my laundry's profitability?

#### Extra capacity.

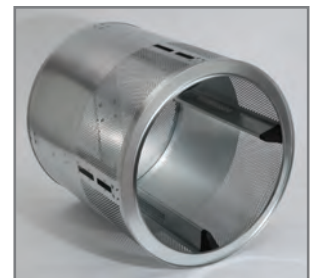
This business is all about turns and getting people in and out fast. Huebsch offers two drying pockets in the space of one single, helping your laundry better handle peak periods.

#### Working together.

While the Stack 30 is a profitable unit, pairing the Stack 45 with it can offer a 44% increase in profit per square foot of tumbler dryers. Customers are drawn to the time savings of large-capacity washer-extractors and they'll also pay a premium vend for the large pockets of the Stack 45.

#### Highly efficient.

Huebsch stack tumbler dryers utilize an axial air flow process, which reduces energy consumption and produces some of the industry's fastest dry times.



This innovative drying process directs all heated air through the load at the optimum time in the tumble process. Faster drying times help your customers accomplish their No. 1 goal — getting in and out fast. Satisfied customers become regular customers, increasing your store's profitability.



## Quality You Can Touch

I want equipment that helps my store present an image of quality. How do Huebsch Stack 30 and Stack 45 models help accomplish this goal?

### Rugged doors.

Stack doors are made of stainless steel to resist chipping and incorporate durable latches and hinges, to stand up to years of wear and stay looking good. Customers will see, feel and hear the quality when they open or close the door.

### Stainless quality.

Adding optional stainless steel front panels and cylinders to the stack tumble dryers gives your laundry a sophisticated look that attracts customers and reinforces that they are using high-quality equipment. Customers come back when they get quality results from quality equipment.

### Galaxy™ 600.

The perfect complement to the Galaxy 600 control on our washer-extractors. Laundry owners can program all Galaxy 600-controlled equipment using our patented Galaxy Vended Software, via infrared technology, and create a completely programmable laundromat. This programming tool enables owners to save time and maximize profits with the ability to modify the tumble dryer's cycle, temperature, price, time (heat, cool-down, top-off) and manage peak customer usage with "time-of-day" pricing.



### Staying in control.

Stack models can be configured with a programmable electronic control that delivers the drying options and ease of use customers desire. These options enable them to achieve the best possible results no matter the load they are drying. A large, digital display on the electronic control yields further customer satisfaction by keeping them apprised of the time remaining on their cycle.



## Easy To Own

How do Stack models make things easier on me as an owner?

### Easy installation.

With single gas, electrical and exhaust connections, installation of a stack tumble dryers is inexpensive when compared to installing twice the number of single units.

### Damage resistant.

Drywall screws that fall out of customers' pockets may damage other brands of tumbler dryers, but NOT Huebsch. Our patented oblong cylinder perforations enable the screws to pass harmlessly through without damaging the tumblers' sweep sheets. See this industry-exclusive feature in action at [www.huebsch.com](http://www.huebsch.com).

### Activation versatility.

Huebsch gives you control to choose the payment system that works best for your business. Stack models can be configured for coin or card activation.

### Low maintenance.

Large lint compartments mean stack tumble dryers don't have to be emptied as often as other models. In addition, a heavy-duty belt delivers a long life to reduce maintenance time and costs.



## Unmatched Durability

Commercial laundry equipment is no small expense; I want peace of mind my equipment will last well into the future. What sets Huebsch apart from other brands in terms of reliability?

**Not just standing behind our equipment, but standing beside you and your business.**

Our **Made-In-America** product comes with an industry-leading bond. The entire machine receives Huebsch's standard three-year warranty. In addition, Huebsch has more service representatives in the field than most brands have in their whole organization.

Huebsch support is further bolstered by an online component and a help line that takes 100,000 calls per year.

\*Parts only, labor not included. See Huebsch Warranty Bond for specifics.



# 30 and 45 lb Stack Tumble Dryer Specifications

Models	HTT30	HTT45	
Control Options	Galaxy™ 600, Basic Electronic	Galaxy™ 600, Basic Electronic	
Dry Weight Capacity - lb (kg)	2 x 30 (13.6)	2 x 45 (20.4)	
Width - in (mm)	31 1/2" (800)	34 1/2" (876)	
Depth - in (mm)	42 3/4" (1086)	48 5/8" (1235)	
Height - in (mm)	76 1/4" (1937)	81" (2059)	
Cylinder Depth - in (mm)	26" (660)	30" (762)	
Cylinder Diameter - in (mm)	30" (762)	33" (838)	
Cylinder Volume - cu. ft. (liters)	10.6 (301)	14.8 (421)	
Door Opening Size - in (mm)	22 11/16" (576)	26 7/8" (683)	
Airflow - cfm (liters/sec.)	50 Hz: 340 (160) 60 Hz: 400 (189)	50 Hz: 500 (236) 60 Hz: 600 (283)	
Energy Data	<b>Gas Models:</b> 50 Hz: 73,000 Btu/hr (21.4 kW) Per Pocket 60 Hz: 73,000 Btu/hr (21.4 kW) Per Pocket <b>Steam Models:</b> At 100 psi (6.9 bar): 3.2 BHP 111,000 Btu/hr (32.5 kW) <b>Electric Models:</b> 21 kW	<b>Gas Models:</b> 50 Hz: 87,000 Btu/hr (25.5 kW) Per Pocket 60 Hz: 95,000 Btu/hr (27.8 kW) Per Pocket <b>Steam Models:</b> N/A <b>Electric Models:</b> N/A	
Electrical Specifications	<b>Gas and Steam</b> 100/200-220/60/1 2W+G 200/60/1 2W+G 120/208-240/60/1 2W/3W+G 208-240/60/1 3W+G 200-208/240/60/3 3W+G 380/60/3 3W+G 460-480/60/3 3W+G 100/200/50/1 2W+G 200/50/1 2W+G 230-240/50/1 2W+G 200/50/3 3W+G 230-240/50/3 3W+G 380/400-415/50/3 3W+G <b>Electric</b> 200-208/60/3 3W+G 240/60/3 3W+G 380/60/3 3W+G 460-480/60/3 3W+G 200/50/3 3W+G 230-240/50/3 3W+G 380/50/3 3W+G 400-415/50/3 3W+G	<b>Amps:</b> 22.0/11.6 N/A 16.0/8.0 N/A 6.4/6.4 3.0 3.3 24.2/15.0 N/A 15.0 5.8 7.0 3.0/3.2 62/PKT 54/PKT 33/PKT 27/PKT 60/PKT 55/PKT 33/PKT 31/PKT	<b>Amps:</b> N/A 11.2 N/A 12.0 9.6/9.6 N/A N/A N/A 11.2 10.8 N/A N/A N/A
Plumbing Connections - in	Gas: 1/2" - NPT    Steam: 3/4" - NPT	Gas: 1/2" - NPT	
Shipping Dimensions	Width Depth Height	Width Depth Height	
Approx. - in (mm)	32 1/2" (825) 47" (1194) 81" (2057)	35 1/2" (902) 54" (1372) 85" (2159)	
Net Weight - lb (kg)	544 (247)	673 (305)	
Shipping Weight - lb (kg)	582 (264)	718 (326)	
Agency Approvals	cCSAus, CE	cCSAus, CE	

Tumble dryer models are made to suit a variety of electrical service characteristics. See your Huebsch distributor for specifications. For further details on installation, refer to Installation, Operation and Maintenance instructions supplied with the tumble dryer. USA and Canada models are certified by C.S.A International.

For the most accurate information, the installation guide should be used for all design and construction purposes. Due to continuous product improvements, design and specifications subject to change without notice. The quality management system of Alliance Laundry Systems' Ripon facility has been registered to ISO 9001:2000.

Printed in the U.S.A. ©Copyright 2013 Alliance Laundry Systems LLC